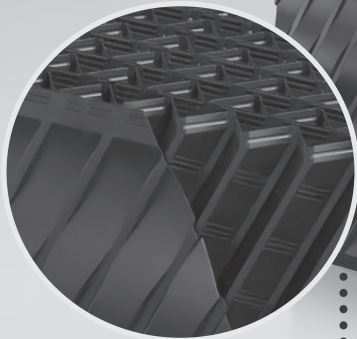
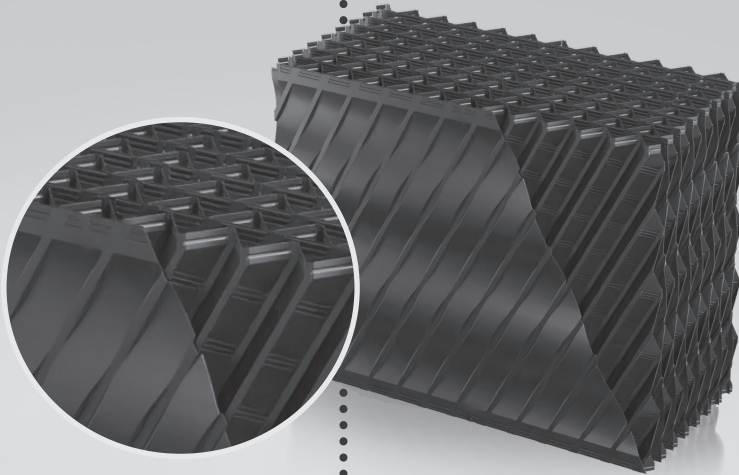




Clean 60

MODULAR LAMELLAR FILLER

CLEAN 60 is modular lamellar pack, obtained by assembling shaped PS sheets by thermoforming.



Use

The **CLEAN 60** modular lamellar pack, given its inherent characteristics such as the size of the channels and the large specific surface area, finds application in:

- **Primary and secondary sedimenters in wastewater and surface water treatment plants**
- **Clariflocculators**
- **Settlers in drinking water treatment plants**

Technical Characteristics

Type: Modular lamellar filler

Material: Polystyrene (PS) with anti-UV

Color: Standard technical black
Food-grade white for potable use

Channel inclination: 60°

Channel shape: Irregular hexagon

Length: up to 1250 mm

Width: 56 - 1008 pitch 56 mm

Height: 1000 mm

Projected area: 13.9 m² / m³

Hydraulic radius: 13.6

CLEAN 60

is made in order to maximize the specific surface area of sedimenters: the special profile of the channels allows easy flow of liquids, thus ensuring an increase in plant efficiency.

The increase in specific surface area and the inclination of the channels ensure the acceleration of the process of separation and sedimentation of suspended solid particles.

CLEAN 60 can be made in blocks of different sizes, and the lamellar pack can also be shaped into a circular shape.

The structure is of the self-supporting type: this implies the lack of need for the use of metal frames, in fact to obtain an extremely rigid and resistant product **CLEAN 60** is composed of one formed sheet for EACH corrugated sheet.

To simplify installation and maintenance operations, the **CLEAN 60 GOLF** type incorporates convenient hooks in the walls.



Main Advantages

The use of PS complying with the most restrictive standards for making **CLEAN 60** lamellar fills ensures, compared to other materials:

- **Lightness, resulting in ease of transport**
- **High mechanical strength**
- **High resistance to chemical agents and biological aggression**
- **Upon request, the product can be supplied in virgin PS compatible with potabilization systems**