

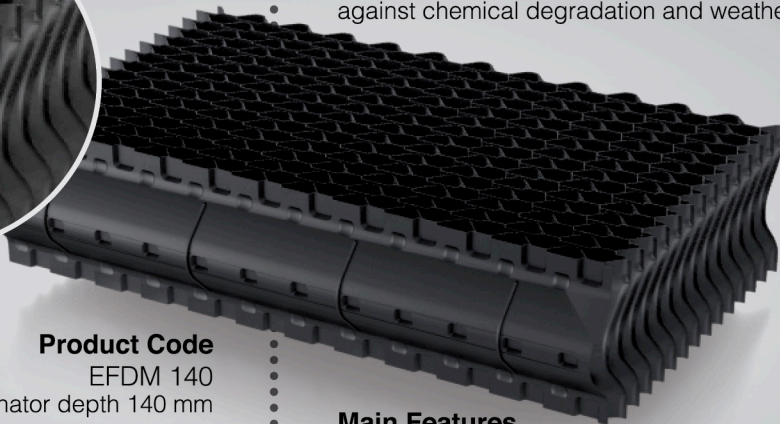
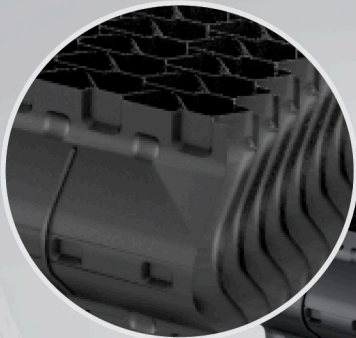


# EFDM 140

## DRIFT ELIMINATOR

This drift eliminator panel is made of solvent-bonded sheets of self-extinguishing, thermoformed PVC.

The drift eliminator's unique cellular design features overlapping PVC sheets. The result is a curved shape with three impact zones that capture the water droplets in the air stream, thereby reducing drift loss to less than 0.001% of circulating water flow. Furthermore, the properties of the material used, together with the drift eliminator's high mechanical strength, offer the highest level of protection against chemical degradation and weather exposure.



### Product Code

EFDM 140

Drift eliminator depth 140 mm

### Material

SELF-EXTINGUISHING PVC  
THAT MEETS ASTM STANDARD E-84  
AND CTI STANDARD 136

### Operating Temperatures

Standard -5° +60°  
High temperature -5° +75°  
Low temperature -40° +60°

### Size

Length: from 900 mm to 3600 mm  
Width: from 300 to 600 mm,  
in increments of 20 mm

*Can be cut to size without sacrificing structural integrity, including circular cuts*

### Thickness Before Forming

500 micron

### Main Features

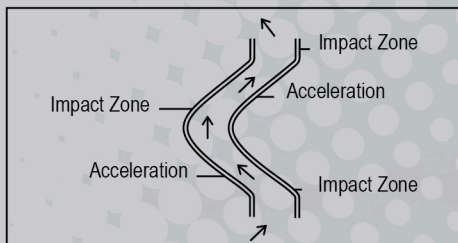
#### Highly efficient drift removal

#### Low drift loss

- Self-extinguishing
- Lightweight and easy to move
- High mechanical strength
- Resistant to chemical degradation and biological attack
- Self-supporting structure
- Interlocking panels designed to eliminate gaps between packs and avoid leaks

### Applications

- Induced draft / crossflow cooling towers
- Chemical scrubbers
- Paint booths
- Air inlets of gas turbines



High Efficiency Sinusoidal Blade Design

